

stylex

Colors Materials Finishes

Updated July 13, 2023

From product to setting, to a full floorplate, the materials you choose are vital to creating inspiring workspaces where people can do their best work.

COLORS, MATERIALS & FINISHES

At Stylex, we have a full range of materials from woods, to stones, to laminates, to powder coats, so you can easily achieve your design intent. Whether your palette is subtle and subdued or saturated and striking, our material options allow for a truly unique design expression.

Sample Requests

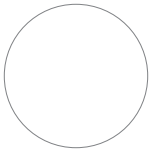
Please contact your local [**Stylex Sales Representative**](#).

METAL	3
POLYPROPYLENE	4
MESH	5
WOOD SEATING	6
VENEER & SOLID WOOD	7
LAMINATE	8
GLASS, STONE & SOLID SURFACE	9
LEATHER & FELT	10
PRODUCT APPLICATION	11

Metal

COLORS, MATERIALS, & FINISHES

POWDER COATED PAINTED METAL



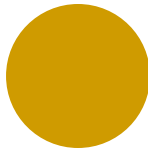
MILK
(MK)



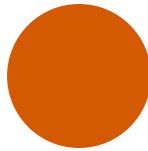
SAND
(SD)



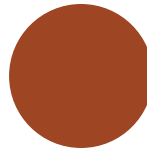
PALE YELLOW
(PY)



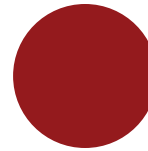
YELLOW
(YL)



ORANGE
(OR)



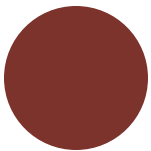
TERRACOTTA
(TC)



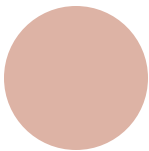
RED
(RD)



RED ORANGE
(RO)



RUSTY RED
(RR)



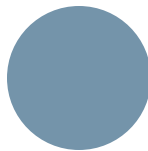
DUSTY PINK
(DP)



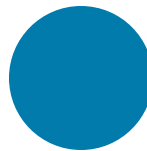
MEADOW GREEN
(MG)



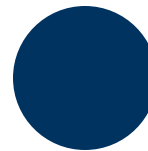
FOREST GREEN
(FG)



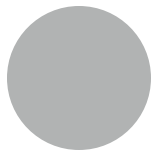
SOFT BLUE
(SB)



BLUE
(BL)



NAVY
(NV)



LIGHT GRAY
(LG)



CHAMPAGNE
(CP)



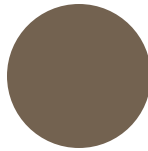
METALLIC SILVER
(MS)



NICKEL
(NK)



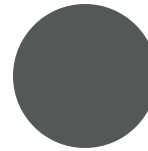
BRASS
(BR)



TAUPE
(TP)



DARK BRONZE
(DB)



DARK GRAY
(DG)



TEXTURED SLATE
(TS)

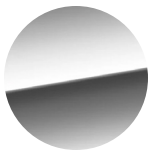


BLACK TWILIGHT
(BT)



BLACK MATTE
(BM)

POLISHED METAL



CHROME
(CH)



SATIN CHROME
(SC)



POLISHED
ALUMINUM
(AL)

PLEASE REFER TO THE [PRODUCT APPLICATION KEY](#) FOR FURTHER SPECIFICATIONS

Polypropylene

COLORS, MATERIALS, & FINISHES

BROOKS POLYPROPYLENE SEAT & BACK



PURE WHITE
(P10)



PALE GRAY
(P4)



ESPRESSO
(P2)



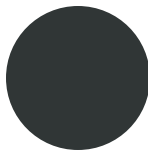
BLACK
(P1)



MILK
(02)



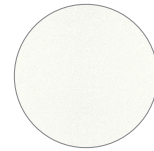
LIGHT GRAY
(03)



DARK GRAY
(04)



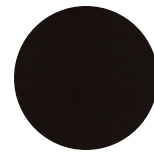
BLACK MATTE
(01)



MILK
(02)



LIGHT GRAY
(03)



BLACK MATTE
(01)

CLICK/EASE UP POLYPROPYLENE FRAME

F4 POLYPROPYLENE FRAME

VERVE POLYPROPYLENE SHELL



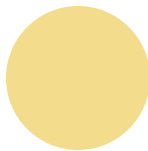
MILK
(02)



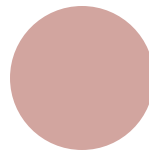
SAND
(19)



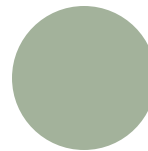
LIGHT GRAY
(03)



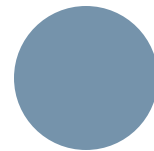
PALE YELLOW
(15)



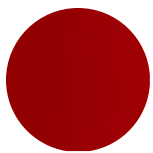
DUSTY PINK
(16)



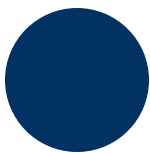
MEADOW GREEN
(17)



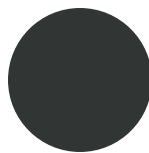
SOFT BLUE
(18)



RED
(06)



NAVY
(10)



DARK GRAY
(12)



BLACK MATTE
(01)

PLEASE REFER TO THE [PRODUCT APPLICATION KEY](#) FOR FURTHER SPECIFICATIONS

Mesh

COLORS, MATERIALS, & FINISHES

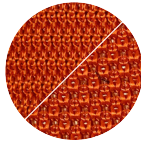
CLICK/F4 MESH BACK & KNIT SEAT



WHITE*
(M5)



SMOKE
(M3/K3)



POPPY
(M13/K13)



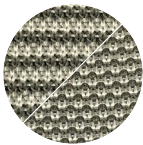
MIDNIGHT BLUE
(M15/K15)



GRAPHITE
(M2/K2)



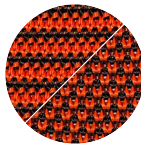
BLACK
(M1/K1)



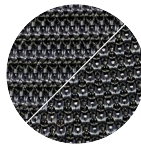
WHITE/SMOKE*
(M28)



BLACK/SMOKE
(M22/K22)



BLACK/RED
(M27/K27)



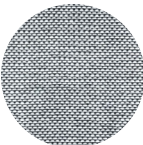
BLACK/MIDNIGHT
BLUE (M26/K26)



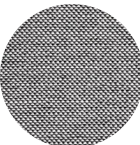
BLACK/BRONZE
(M23/K23)

* NOT OFFERED AS KNIT SEAT

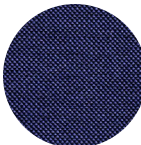
INSIGHT MESH BACK



SILVER ICE
(38)



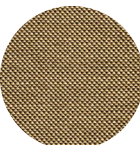
ZINC
(32)



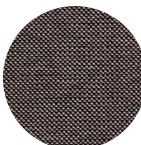
MARINE
(36)



MUSHROOM
(31)



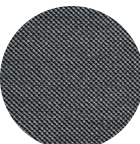
CAMEL
(35)



JAVA
(33)

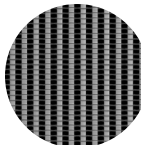


ANTHRACITE
(30)



BLACK ICE
(34)

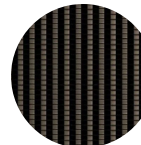
SAVA MESH BACK & SEAT



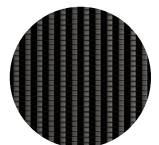
SILVER WHITE
(M3)



BLACK
(M1)



BRONZE
(M2)



WARM GRAY
(M4)

ZEPHYR MESH BACK & SEAT



PLATINUM
(102)



BLACK
(101)

PLEASE REFER TO THE [PRODUCT APPLICATION KEY](#) FOR FURTHER SPECIFICATIONS

Wood Seating

COLORS, MATERIALS, & FINISHES

WOOD CHAIR LEGS



NATURAL MAPLE
(83)



WHITE OAK
(81)



WALNUT
(85)



OPAQUE BLACK
(87)



NATURAL MAPLE
(83)



WHITE OAK
(81)



WALNUT
(85)

WOOD CHAIR ARMS

DELA SOLID WOOD ARM CAPS



WHITE OAK
(81)



TONED WALNUT
(89)



ALPI RIFT
CUT OAK
(PZ30)



TONED WALNUT
(PZ20)

BROOKS WOOD BACK & DELA WOOD SEAT/BACK

VERVE WOOD SHELL



RIFT CUT OAK
(DZ02)



FLAT CUT
WALNUT
(DZ01)

WELCOME WOOD BACK



CLEAR MAPLE
(WL01)



MEDIUM
CHERRY
ON MAPLE
(WL03)



TONED WALNUT
(PZ20)

PLEASE REFER TO THE [PRODUCT APPLICATION KEY](#) FOR FURTHER SPECIFICATIONS

Veneer & Solid Wood

COLORS, MATERIALS, & FINISHES

VENEER



TONED ASH
(WV05)



NATURAL MAPLE
(WV06)



NATURAL RECON
WHITE OAK
(WV49)



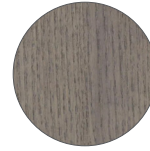
TONED RECON
OAK
(WV45)



TONED OAK
(WV44)



NATURAL
WHITE OAK
(WV48)



LIGHT GREY
(WV01)



NATURAL FLAT
CUT WALNUT
(WV46)



NATURAL RIFT
CUT WALNUT
(WV47)



TONED RECON
WALNUT
(WV41)



MEDIUM
CHERRY
(WV04)



TONED WENGE
(WV43)



WARM GREY
(WV02)



DARK TONED
OAK
(WV42)



OPAQUE BLACK
(WV03)

SOLID WOOD TABLE TOPS



NATURAL MAPLE
(83)



ASH
(84)



WHITE OAK
(81)



WALNUT
(85)

STILL WOOD SCREENS, DAU TABLE TOPS & UMO TABLES



NATURAL MAPLE
(83)



WHITE OAK
(81)



WALNUT
(85)



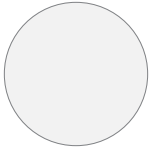
OPAQUE BLACK
(87)

PLEASE REFER TO THE [PRODUCT APPLICATION KEY](#) FOR FURTHER SPECIFICATIONS

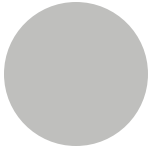
Laminate

COLORS, MATERIALS, & FINISHES

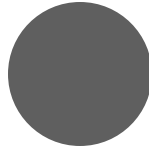
FENIX® LAMINATE



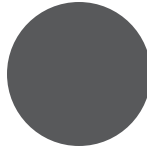
BIANCO KOS
(LM41)



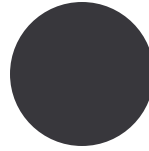
GRIGIO EFESO
(LM42)



GRIGIO LONDRA
(LM43)

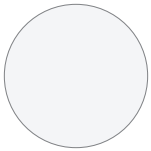


GRIGIO BROMO
(LM44)



NERO INGO
(LM45)

WILSONART® SOLID LAMINATE



DESIGNER WHITE
(LM01)



ALABASTER
(LM02)



WALLABY
(LM03)



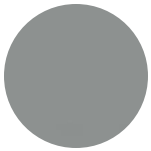
DOVE GREY
(LM05)



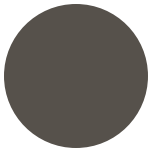
FASHION GREY
(LM06)



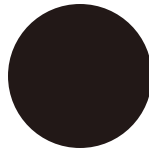
SHADOW
(LM04)



NORTH SEA
(LM08)



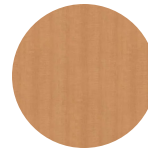
SLATE GREY
(LM07)



BLACK
(LM09)



FUSION MAPLE
(LM10)



MONTICELLO MAPLE
(LM11)



RIVER CHERRY
(LM12)



AMBER CHERRY
(LM13)



WALNUT HEIGHTS
(LM14)



MONTANA
WALNUT
(LM15)



XANADU
(LM16)



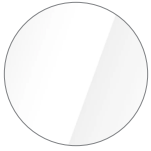
ASIAN NIGHT
(LM17)

PLEASE REFER TO THE [PRODUCT APPLICATION KEY](#) FOR FURTHER SPECIFICATIONS

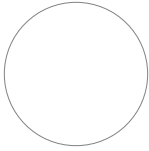
Glass, Stone & Solid Surface

COLORS, MATERIALS, & FINISHES

GLASS TABLE TOPS



LOW-IRON
GLASS
(SFGR)



WHITE
BACK-PAINTED
(02)



BLACK
BACK-PAINTED
(01)

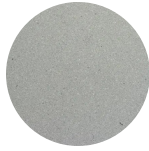
CAESARSTONE® TABLE TOPS



PURE WHITE
(CS65)



STATUARIO
NUVO
(CS96)

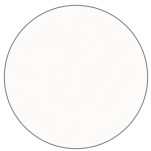


SLEEK
CONCRETE
(CS52)

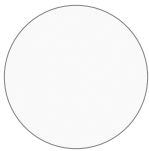


JET BLACK
(CS51)

SOLID SURFACE TABLE TOPS



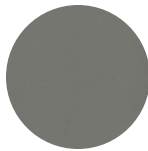
ARCTIC WHITE
(01)



IVORY WHITE
(03)



GREY
(04)



STEEL GREY
(05)



BLACK*
(06)

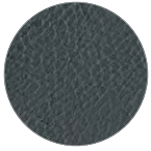
* BLACK SOLID SURFACE OPTION IS CORIAN® AND
REMAINING COLORS ARE LG HI-MACS®

PLEASE REFER TO THE [PRODUCT APPLICATION KEY](#) FOR FURTHER SPECIFICATIONS

Leather & Felt

COLORS, MATERIALS, & FINISHES

DAU LEATHER HANDLES



BLACK
WESTTAN



PEANUT
WEST TAN

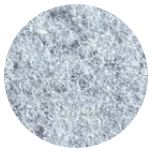


VEG. TANNED

DAU FELT HANDLES



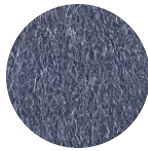
SANDSTONE



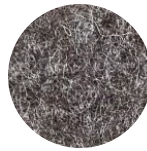
LIGHT GRANITE



CAMEL



STEEL



BARK



ANTHRACITE



DARK NUTMEG



BLACK

PLEASE REFER TO THE [PRODUCT APPLICATION KEY](#) FOR FURTHER SPECIFICATIONS

Product Application

COLORS, MATERIALS, & FINISHES

PRODUCT	METAL	POLYPROPYLENE	MESH	WOOD	LAMINATE	GLASS	STONE & SOLID SURFACE
<u>Adorn</u>	26 painted colors (frames & tops), bright & satin chrome	-	-	4 solid wood top options	-	2 back-painted colors	4 Caesarstone & 5 solid surface
<u>Brooks</u>	26 painted colors, bright chrome	4 colors	-	Alpi rift cut oak & toned walnut seat back options	-	-	-
<u>Click</u>	3 cylinder colors	4 colors	11 colors	-	-	-	-
<u>Cove Lounge</u>	26 painted colors, polished AL	-	-	Natural maple, white oak, walnut & opaque black wood leg options	-	-	-
<u>Cove Tables</u>	26 painted colors	-	-	15 veneer options	17 Wilsonart & 5 Fenix colors	-	-
<u>Dau</u>	26 painted colors, bright chrome, satin chrome	-	-	4 solid wood top options 3 leather & 8 felt handles	-	-	-
<u>Dela</u>	26 painted colors, bright chrome	-	-	2 plywood seat options 2 wood arm cap options	-	-	-
<u>Dia</u>	26 painted colors, satin chrome	-	-	Natural maple, white oak & walnut wood top options	-	Starphire low iron glass	-
<u>F4</u>	26 painted colors, polished AL	3 colors	11 colors	White oak & walnut wood arm options	-	-	-
<u>Ease Up</u>	-	4 colors	-	-	-	-	-
<u>Free Address 2.0</u>	26 painted colors	-	-	15 veneer options	17 Wilsonart & 5 Fenix colors	-	-
<u>Free Address Tables</u>	26 painted colors	-	-	15 veneer options	17 Wilsonart & 5 Fenix colors	-	-
<u>Insight Executive</u>	26 painted colors, polished AL	-	-	-	-	-	-
<u>Insight Family</u>	26 painted colors, polished AL	-	8 colors	-	-	-	-
<u>Mark 2</u>	26 painted colors	-	-	-	-	-	-
<u>Metrum</u>	26 painted colors, polished AL	-	-	Natural maple, white oak & walnut wood leg, arm & top options	-	-	4 Caesarstone & 5 solid surface
<u>Nestle</u>	26 painted colors, bright chrome	-	-	Natural maple, white oak & walnut wood leg options	-	-	-
<u>NYC Loose</u>	26 painted colors, polished AL	-	-	-	-	-	4 Caesarstone
<u>NYC Relaxed</u>	26 painted colors, polished AL	-	-	-	-	-	4 Caesarstone
<u>NYC Standard</u>	26 painted colors, polished AL	-	-	-	-	-	4 Caesarstone

PLEASE VISIT STYLEXDESIGN.COM FOR MORE DETAILS

Product Application

COLORS, MATERIALS, & FINISHES

PRODUCT	METAL	POLYPROPYLENE	MESH	WOOD	LAMINATE	GLASS	STONE & SOLID SURFACE
<u>NYC Wrap-Over</u>	26 painted colors, polished AL	-	-	-	-	-	4 Caesarstone
<u>Obair</u>	26 painted colors	-	-	15 veneer options	17 Wilsonart & 5 Fenix colors	-	-
<u>Ridge Guest</u>	26 painted colors, bright chrome	-	-	Natural maple & white oak wood leg options	-	-	-
<u>Sava</u>	Black matte, bright chrome, polished AL	-	-	-	-	-	-
<u>Sava Mesh</u>	Black matte, bright chrome, polished AL	-	4 colors	-	-	-	-
<u>Sava Mesh Back</u>	Black matte, bright chrome, polished AL	-	4 colors	-	-	-	-
<u>Share</u>	26 painted colors, polished AL	-	-	Natural maple, white oak & walnut wood leg options	-	-	-
<u>Still Screens</u>	26 painted colors	-	-	4 solid wood options	-	-	-
<u>Trim</u>	26 painted colors (frames & tops)	-	-	White oak & walnut solid wood top options	17 Wilsonart & 5 Fenix colors	2 back-painted colors	4 Caesarstone & 5 solid surface
<u>Umo</u>	-	-	-	4 wood finish options	-	-	-
<u>Underline</u>	26 painted colors, polished AL	-	-	4 wood leg options	-	-	-
<u>Verve</u>	26 painted colors, polished AL	11 colors	-	4 wood leg options	-	-	-
<u>Verve Wood</u>	26 painted colors, polished AL	-	-	4 wood leg colors 2 wood shell options	-	-	-
<u>Welcome</u>	26 painted colors, bright chrome	-	-	Clear maple, medium cherry on maple & toned walnut seat back options	-	-	-
<u>Yoom</u>	26 painted colors, polished AL	-	-	-	-	-	-
<u>Yoom Soft</u>	26 painted colors, polished AL	-	-	-	-	-	-
<u>Zephyr</u>	26 painted colors, bright chrome	-	2 colors	-	-	-	-

PLEASE VISIT [STYLEXDESIGN.COM](https://stylexdesign.com) FOR MORE DETAILS