

L U N A  
S T Y L E X



## Luna Textiles Collection

A quick guide to pre-approved and pre-tested Luna Textiles ready for use on a variety of Stylex Seating offerings.

## About Luna Textiles

**Passion defines us as a textile studio; it drives us to create inspirational textiles for the built environment. Committed to excellence, we design with purpose and we focus our expertise on bringing unique textiles to life.**

Luna textiles was founded in San Francisco in 1994. Beginning from a passionate spark for design, Luna strives to bring new style to commercial interiors. Our textiles are designed for the commercial, hospitality, healthcare, education, and residential markets.

We offer a complete range of textiles for use in upholstery, panel, drapery, and wall covering applications. With a concern for the well-being of those who inhabit or interact with our products, we select intentional materials with content that ranges from wool and cotton to recycled polyester and nylon. Environmental sustainability is a priority for Luna. Our high-quality

products are often times made from natural, recycled, or rapidly renewable fibers.

The creativity and ingenuity that shaped Luna's beginnings, continue today. As our company grows, we continue to seek out passion for creating aesthetically timeless textiles and provide a thoughtfully curated collection we hope provides practical and inspiring products.





# Blueprint

---

## Colorways

13 colorways

## Application

Upholstery

## Composition

44% Nylon, 26% Rayon, 18% Polyester,  
12% Linen

## Abrasion

100,000 double rubs (Wyzenbeek)

## Flammability

California Technical Bulletin 117-2013

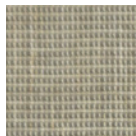
## Notes

Bleach cleanable

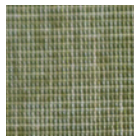
**Click here** to see the full specification  
information and to order samples



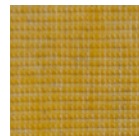
Trace  
UPR793



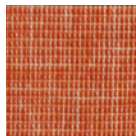
Draft  
UPR794



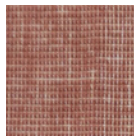
Hillside  
UPR795



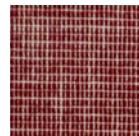
Herschel  
UPR796



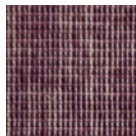
Sunset  
UPR797



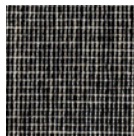
Woods  
UPR798



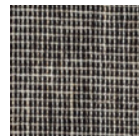
Shulman  
UPR799



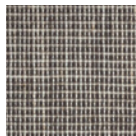
Eventide  
UPR800



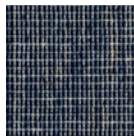
No. 22  
UPR801



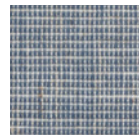
Pierre  
UPR802



Julius  
UPR803



Stahl  
UPR804



Carlotta  
UPR805





# Bungalow

---

**Colorways**

9 colorways

**Application**

Upholstery

**Composition**

40% Acrylic, 28% Cotton, 14% Polyester,  
9% Linen, 9% Viscose

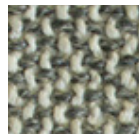
**Abrasion**

50,000 double rubs (Wyzenbeek)

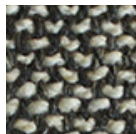
**Flammability**

California Technical Bulletin 117-2013

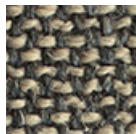
**Click here** to see the full specification  
information and to order samples



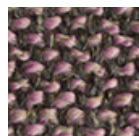
Elephant  
UGO641



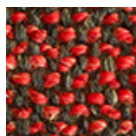
Piano  
UGO642



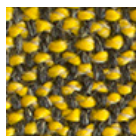
Viking  
UGO643



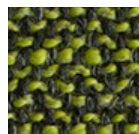
Pastille  
UGO644



Volcano  
UGO645



Bumble  
UGO646



Jive  
UGO647



Snorkel  
UGO648



Fjord  
UGO649



# Linen

---

## Colorways

11 colorways

## Application

Upholstery

## Composition

45% Linen, 28% Nylon, 16% Viscose,  
11% Polyester

## Abrasion

100,000 double rubs (Wyzenbeek)

## Flammability

California Technical Bulletin 117-2013, NFPA  
260

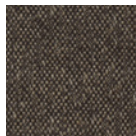
## Notes

Bleach cleanable

**Click here** to see the full specification  
information and to order samples



Checkerboard  
UEN551



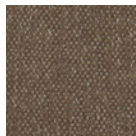
Morel  
UEN552



Puppy  
UEN553



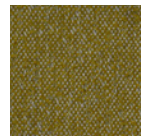
Whey  
UEN554



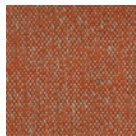
Doe  
UEN555



Lullaby  
UEN556



Sage  
UEN557



Apricot  
UEN558



Runway  
UEN559



Mulberry  
UEN560



Mascot  
UEN561





# Notion

---

## Colorways

13 colorways

## Application

Upholstery, Panel

## Composition

72% Polyester, 28% Post-Industrial  
Recycled Polyester

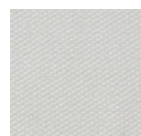
## Abrasion

100,000 double rubs (Wyzenbeek)

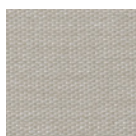
## Flammability

California Technical Bulletin 117 E,  
ASTM E84 Class 1 (Unadhered), NFPA 260

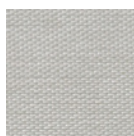
**Click here** to see the full specification  
information and to order samples



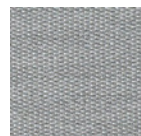
Whisper  
UOT361



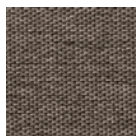
Quinoa  
UOT362



Emu  
UOT363



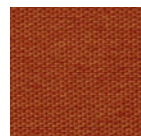
Shoal  
UOT364



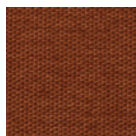
Sabre  
UOT365



Maelstrom  
UOT366



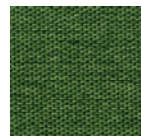
Goldfish  
UOT367



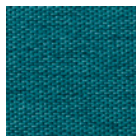
Squash  
UOT368



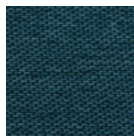
Mustard  
UOT369



Laurel  
UOT370



Bottlenose  
UOT371



Flood  
UOT372



Hummingbird  
UOT373



# Three-D

---

**Colorways**

8 colorways

**Application**

Upholstery

**Composition**

40% Acrylic, 28% Cotton, 14% Polyester, 9% Linen, 9% Viscose

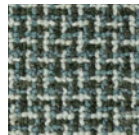
**Abrasion**

50,000 double rubs (Wyzenbeek)

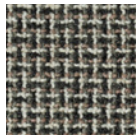
**Flammability**

California Technical Bulletin 117-2013

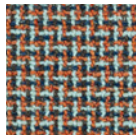
**Click [here](#)** to see the full specification information and to order samples



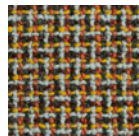
Myrtle  
UDD001



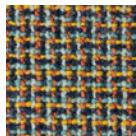
Juxtapose  
UDD002



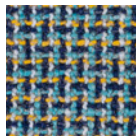
Cubic  
UDD003



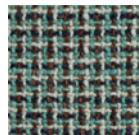
Kitchen Sink  
UDD004



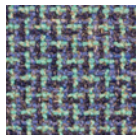
Telly  
UDD005



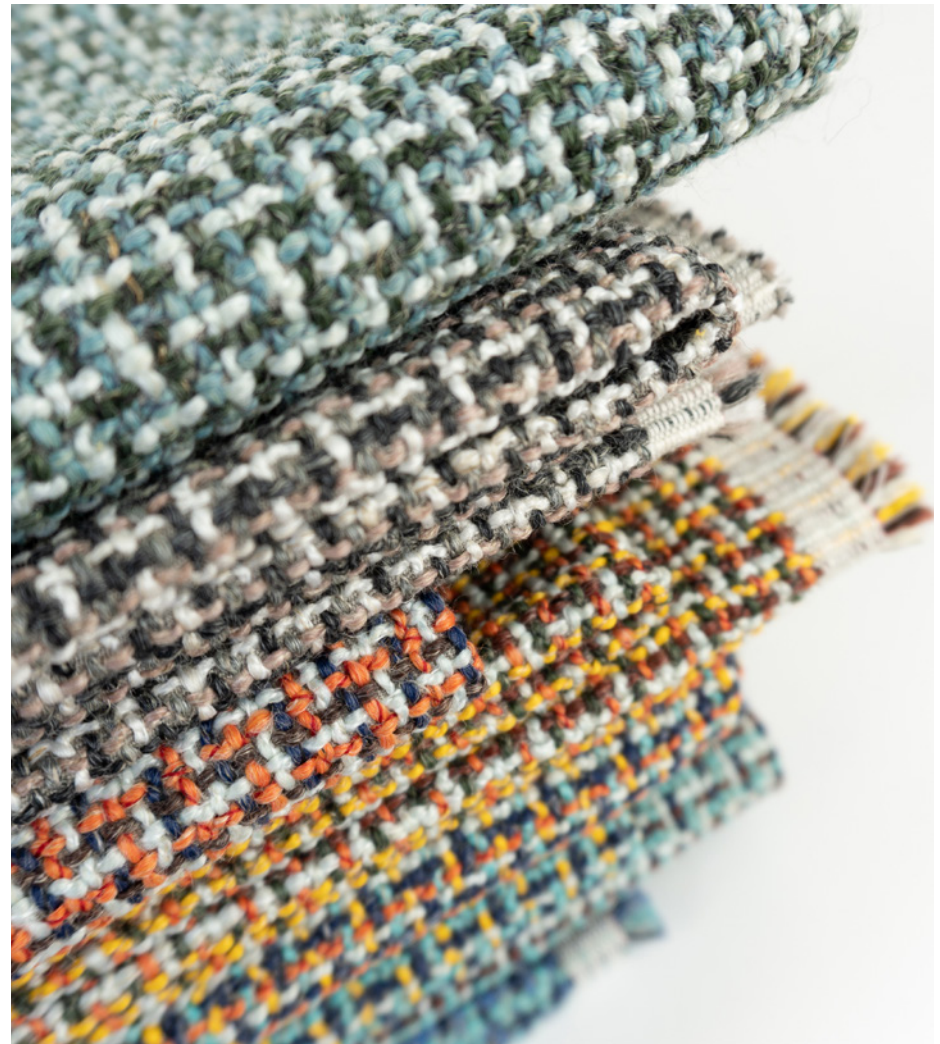
Hockney  
UDD006



Parallax  
UDD007



Submerge  
UDD008





# Woohl

---

## Colorways

14 colorways

## Application

Upholstery, Panel

## Composition

60% Post-Consumer Recycled Polyester,  
40% Polyester

## Abrasion

100,000 double rubs (Wyzenbeek)

## Flammability

California Technical Bulletin 117-2013,  
ASTM E84 Class 1 (Unadhered)

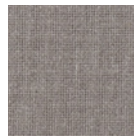
**Click here** to see the full specification  
information and to order samples



Evening  
UHL571



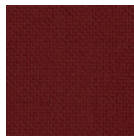
Matrix  
UHL572



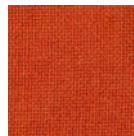
Fog  
UHL573



Camellia  
UHL574



Darling  
UHL575



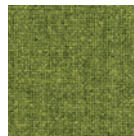
Sassy  
UHL576



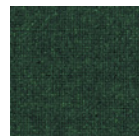
Beeswax  
UHL577



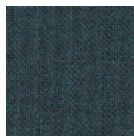
Camel  
UHL578



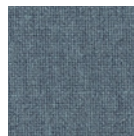
Marsh  
UHL579



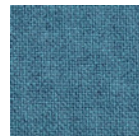
Drake  
UHL580



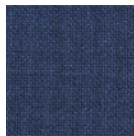
Submarine  
UHL581



Eddy  
UHL582



Lagoon  
UHL583



Anchor  
UHL584





L U N A

