

camira

STYLEX

**The
Natural Fiber
Collection**





From farm to fabric

With roots dating to 1783, we've had a belief that you "only ever get out what you put in," which is why so much of who we are goes into what we make. We put our heart and soul into making fabrics, but with a real sense of responsibility for the bigger picture from the raw materials we use to the manufacturing processes, and with the involvement of many different people from start to finish.

Sustainability looms large in our thinking. It goes to the core of who we are, what we do and the legacy we leave behind. It's reflected in the products we design, the materials we use and the time-honed skills which go into making yarn and fabric.

We have innovated a totally new category of materials using nature's finest and cleverest renewables – natural "bast" fibres from the stems of harvested plants and pure new wool. So our sustainable textile expertise goes right from farm to fabric and we handle everything in between.



camira

camira

Blazer

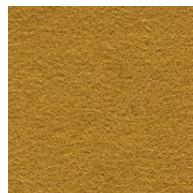
Description

Blazer is a classic pure new wool upholstery fabric with a billiard cloth felted finish. It is made from premium New Zealand lambswool, where responsible farming provides the highest quality raw material which is soft, clean and bright, which is ideal for spinning, weaving and dyeing. The colour palette is an exciting mix of solids and mélanges across the full colour spectrum, creating a versatile fabric suitable for wide-ranging furniture applications.



Technical Information

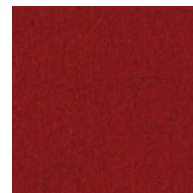
Composition	100% Virgin Wool. Non metallic dyestuffs
Environment	Certified to Indoor Advantage Gold
Width	54 inches minimum
Weight	13 1/2 oz/sq yd ±5%
Abrasion	Independently certified to ≥75,000 double rubs
Flammability	California Technical Bulletin 117 - 2013 NFPA 260 + UFAC Class 1, BS 7176 Low Hazard ASTM E84 Class 1 or A (Adhered) ASTM E84 Class 1 or A (Un-adhered) NFPA 701 When treated IMO FTP Code (Part 8)



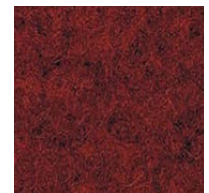
Eynesbury CUZ2W



Wesley CUZ82



Wellington CUZ13



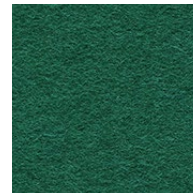
Edge Hill CUZ90



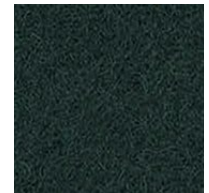
Ulster CUZ1F



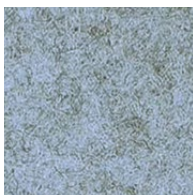
Camphill CUZ1K



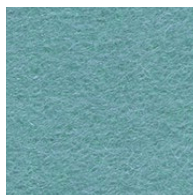
Montcrest CUZ3A



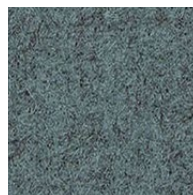
Hull CUZ1P



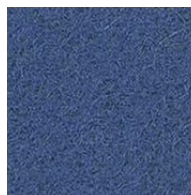
Plymouth CUZ1R



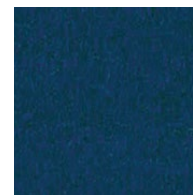
Woodcroft CUZ2Z



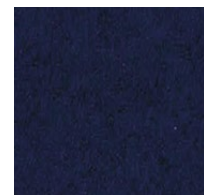
Latymer CUZ33



Manchester CUZ1V



Knightsbridge CUZ26



Oxford CUZ09



Dartmouth CUZ2Q



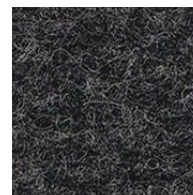
St Andrews CUZ86



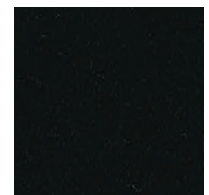
Trevelyan CUZ31



Aberlour CUZ1J



Silcoates CUZ30



Napier CUZ08

[Click here](#) to view full color palette and order memo samples

camira

Craggan Flax

Description

Warmly welcoming, Craggan Flax is a textile to make any interior feel like home. Deeply textured and thickly woven, it effortlessly blends comfort with style to bring irresistible tactility and visual detail to both task and soft seating. Crafted from a blend of wool and flax, this sustainable fabric retains the raw appeal of its natural composition, while possessing the contemporary aesthetic of a chunky weave to provide an element of stylized texture.

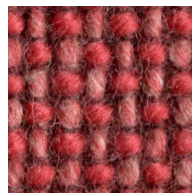


Technical Information

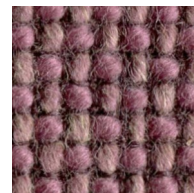
Composition	85% Wool, 10% Flax, 5% Nylon
Environment	Certified to Indoor Advantage Gold
Width	54 inches minimum
Weight	18 1/2 oz/sq yd ±5%
Abrasion	Independently certified to ≥100,000 double rubs
Flammability	California Technical Bulletin 117 - 2013 NFPA 260 + UFAC Class 1 BS 7176 Medium Hazard IMO FTP Code (Part 8) ASTM E84 Class 1 or A (Adhered) ASTM E84 Class 2 or B (Un-adhered)



Knoll CRA11



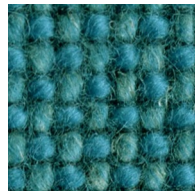
Talus CRA14



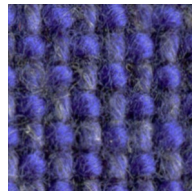
Wold CRA15



Brae CRA20



Loch CRA19



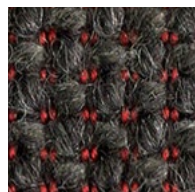
Trek CRA18



Marsh CRA04



Cave CRA06



Millstone CRA07



Bracken CRA03



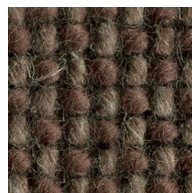
Esker CRA21



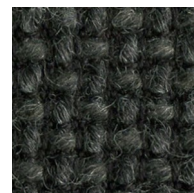
Gravel CRA08



Scree CRA10



Drumlin CRA12



Swale CRA09

[Click here](#) to view full color palette and order memo samples

Main Line Flax

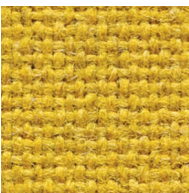
Description

Main Line Flax builds on our industry leading bast fiber expertise to create a new inherently flame retardant fabric from sustainable sources. A symbol of purity, wild flax has been used in textiles for thousands of years thanks to its strong, long and smooth fibers found inside the stem of the plant. The fiber is spun into a 75-25 wool flax blend, then fiber dyed to create beautiful mixture yarns which are woven into interesting solids and cross-colors inspired by the rich tones of rare jewels.



Technical Information

Composition	75% Pure New Wool, 25% Flax
Environment	Certified to EU EcoLabel Certified to Indoor Advantage Gold
Width	54 inches minimum
Weight	13 oz/sq yd ±5%
Abrasion	Independently certified to ≥100,000 double rubs
Flammability	California Technical Bulletin 117 - 2013 NFPA 260 + UFAC Class 1, BS 7176 Low Hazard ASTM E84 Class 1 or A (Adhered) ASTM E84 Class 2 or B (Un-adhered) IMO FTP Code (Part 8)



Tooting MLF17



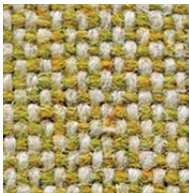
Lambeth MLF08



Barbican MLF03



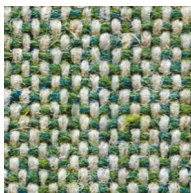
Wembley MLF11



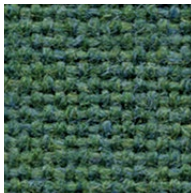
Kensington MLF07



Finsbury MLF30



Newbury MLF10



Farringdon MLF29



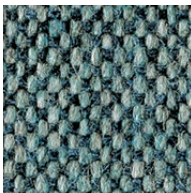
Newbury MLF10



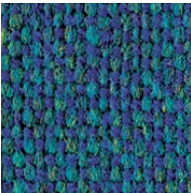
Bayswater MLF24



Bethnal MLF25



Westminster MLF22



Pimlico MLF34



Brompton MLF35



Upminster MLF20



Morden MLF12



Bank MLF23



Camden MLF26



Temple MLF16



Edgware MLF28

[Click here](#) to view full color palette and order memo samples

camira

Synergy

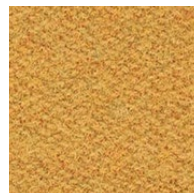
Description

Epitomising natural simplicity, Synergy is a wool rich fabric which is at once both irresistibly soft and ultra-high performing. Delicately felted, with a beautifully relaxed drape, the understated aesthetics showcase the intriguing coloration of this considered textile. Featuring exquisite fiber dyed shades and sumptuous piece dyed solids within its palette of 75 colorways, there truly is a tone for every scheme.



Technical Information

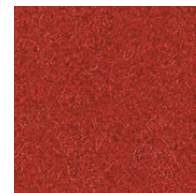
Composition	95% Pure New Wool, 5% Nylon
Environment	Certified to the EU Ecolabel Certified to Indoor Advantage Gold
Width	54 inches minimum
Weight	11 ³ / ₄ oz/sq yd ±5%
Abrasion	Independently certified to ≥100,000 double rubs
Flammability	California Technical Bulletin 117 - 2013 NFPA 260 + UFAC Class 1, BS 7176 Low Hazard ASTM E84 Class 2 or B (Adhered), ASTM E84 Class 2 or B (Un-adhered) IMO FTP Code (Part 8), BS 7176 Medium Hazard when FR treated ASTM E84 Class 1 or A (Adhered) when FR treated NFPA 701 when FR treated



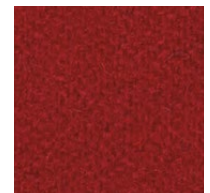
Relate LDS44



Congregate LDS83



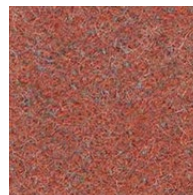
Mutual LDS84



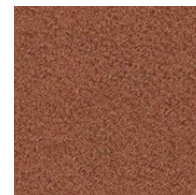
Global LDS86



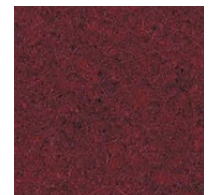
Affinity LDS74



Work LDS73



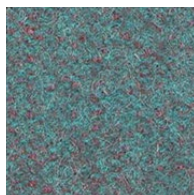
Combo LDS77



Values LDS87



Regard LDS54



Kinship LDS56



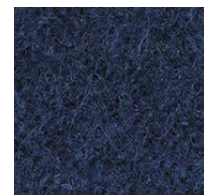
Guild LDS63



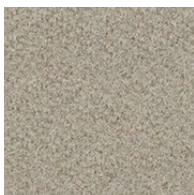
Collaborate LDS68



Warmth LDS67



Alike LDS62



Level LDS20



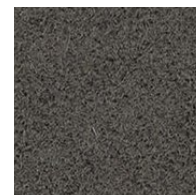
Serendipity LDS08



Partner LDS16



Tag LDS33



Hook LDS29



Mix LDS17

[Click here](#) to view full color palette and order memo samples