

stylex

Zephyr

PRICE LIST

Effective November 01, 2023

General Information

GENERAL INFORMATION

Terms
Net 30 days from date of invoice.
FOB Delanco, NJ

Damaged Shipments
All Stylex products are carefully inspected before they are packed in sturdy cartons designed to satisfy shipping requirements. Stylex is not responsible for damage in shipment. The transportation company assumes responsibility for delivering products to you in good condition when the bill of lading is signed. You protect yourself by refusing shipments showing damage or shortage until transportation company has noted on the delivery sheet the extent of damage or shortage. Concealed damage should be reported to the carrier as soon as discovered, but not later than 15 days after receiving shipment.

Return/Restocking Policy
Return shipments will not be accepted unless specifically authorized by Stylex in writing. The Return Authorization number should be clearly marked on the carton. The customer returning Stylex products is responsible for return shipping costs. Merchandise must be returned unused. Returned merchandise is subject to a 35% restocking fee.

Specials/Customs
Modifications to standard products will be considered for large runs. Contact Stylex for more information.

Design Changes
In keeping with modern manufacturing advances, Stylex reserves the right to incorporate minor modifications and design changes in products without notice.

Cancellation Policy
No charge prior to production except for inventory specifically requisitioned to fulfill the particular order. After production has begun, only actual costs incurred, including labor and material, will be billed to the customer.

WARRANTY

Except as provided below, Stylex warrants exclusively to the original Purchaser of our product that all parts, under normal use and service, will be free from defects in workmanship and material for a period of ten (10) years from the date of purchase. "Normal use and service" means that the product will be used in a typical office environment for 40-45 hours per week.

This warranty is subject to the following limitations, exclusions and provisions:

Wood components of plywood stacking chairs
(such as Brooks and Welcome)
5 years

Upholstery
(including mesh used for Click, F4, Insight, and Zephyr Mesh)
3 years

SAVA Mesh
10 years

COM Upholstery
No warranty
Stylex makes every effort to ensure that the COM Upholstery it approves is suitable for the intended use. Nevertheless, we will not warrant, and assume no responsibility for, the durability or tailoring quality of any COM or COL. If you have any concerns about the ultimate appearance of any covering, please order an upholstered sample.

Painted Stack Chair Frames
No Warranty
We will not warrant the finish of painted stack chair frames against damage from stacking. We recommend ordering chrome frames for chairs that will be stacked.

Felt Glides
No warranty
Due to the different surfaces on which felt glides may be used, we cannot warrant their durability over time.

If this product fails during normal use and service within the applicable warranty period (other than through normal wear and tear), please send a description of the relevant part and the nature of the defect, together with proof of purchase of the product, to Stylex at: Customer Service. c/o Stylex, P.O. Box 5038, Delanco, NJ 08075. PLEASE DO NOT RETURN PARTS OR THE PRODUCT TO STYLEX UNLESS INSTRUCTED TO DO SO BY STYLEX. Stylex will, at its option, either repair or replace the product or the part found defective by Stylex completely without charge for materials or labor. Purchaser may be required (at the option of Stylex) to return to Stylex at Purchaser's expense any defective part with all freight or shipping charges prepaid. The foregoing warranty shall be void if the product has been altered or repaired (other than by Stylex). The warranty does not cover damage to the product caused by accident, neglect, misuse, abuse, modification to the product by anyone other than Stylex or damage caused by use of the product for a purpose other than that for which it was designed. This warranty extends only to the original Purchaser of the product.

No Other Warranties
This warranty is in lieu of all other warranties, expressed or implied, including, but not limited to, implied warranties of merchantability and fitness for a particular purpose. The rights and remedies provided herein are the exclusive rights and remedies of the original purchaser of the product.

No Liability For Damages
In no event shall Stylex or its suppliers be responsible or liable for any special, indirect, consequential, or incidental damages. In no event shall the liability of Stylex exceed the actual purchase price paid to Stylex for the product.

Out of Warranty Products
For all products no longer covered by our warranty, please refer to our Design for Durability and Upgradability Policy. Contact Customer Service if you would like to purchase any replaceable components to further extend the life of any Stylex seating product. This warranty applies to all Stylex products purchased on April 13, 2018, and thereafter.

PRODUCT TAKE BACK PROGRAM

At Stylex, responsible stewardship of our products extends beyond their initial use. Our Product Take Back Program provides a practical solution for the end of our products' intended life cycle.

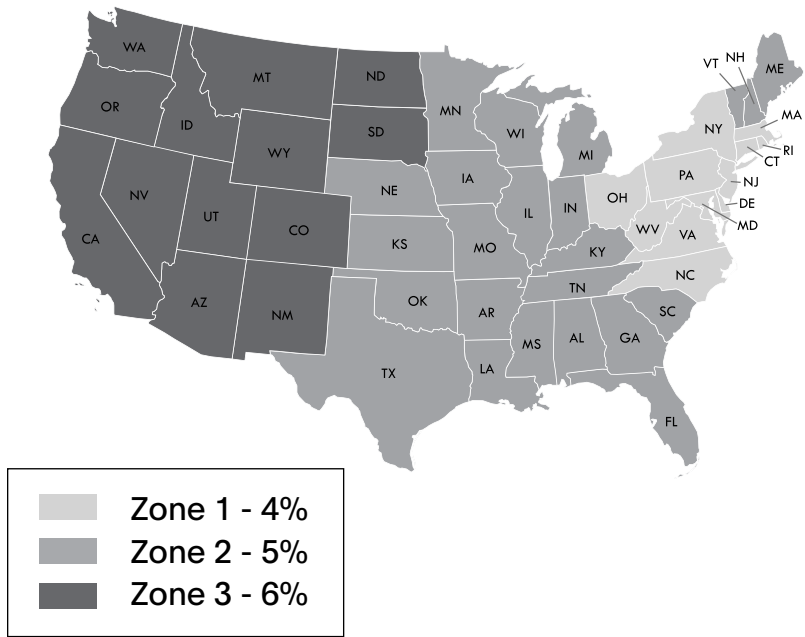
Through our partnership with ANEW, a 501(c)(3) nonprofit organization, we offer clients a comprehensive take-back solution for surplus office furniture and materials, regardless of their condition. ANEW's mission aligns with ours—to connect surplus resources with non-profits, public agencies, and underserved communities, minimizing landfill impact and maximizing corporate social responsibility.

By repurposing surplus items, we strengthen community networks and reduce environmental impact. Stylex proudly supports ANEW, integrating this partnership into our strategic sales strategy since 2014. Learn more at www.aneufound.org.

Initiate a Product Take Back through ANEW by emailing Stylex at info@stylexdesign.com. For additional end-of-life recovery options, refer to our Product Disassembly Instructions and End of Life Recovery Options documents, available in the Resources section of each product on our website. Together, let's build a sustainable future.

FREIGHT PROGRAM

	ZONE 1 - 4%	ZONE 2 - 5%	ZONE 3 - 6%
Stylex offers a Guaranteed Freight Program, which provides the purchaser the ability to determine shipping and handling charges at the time of order. Freight charges will be calculated as a percentage of the net product price and added to the invoice at the time of shipment. The continental United States has been divided into three zones. Please use the map below to determine the freight charges for the product's destination. There is a minimum freight charge of \$150.	Connecticut Delaware New York New Jersey Maryland Massachusetts North Carolina Ohio Pennsylvania Rhode Island Virginia Washington D.C. West Virginia	Alabama Arkansas Canada, Ontario Canada, Quebec Florida Georgia Iowa Illinois Indiana Kansas Kentucky Louisiana Nebraska New Hampshire Oklahoma Maine Michigan Minnesota Missouri Mississippi South Carolina Tennessee Texas Vermont Wisconsin	Arizona California Colorado Idaho Montana Nevada New Mexico North Dakota Oregon South Dakota Utah Washington Wyoming Quote Per Project Alaska Hawaii Canada (outside Ontario & Quebec) Mexico



General Information

TEXTILE PARTNERS & APPROVALS

Textile Partners
To customize your furniture performance needs and design vision, Stylex offers a wide selection of in-graded leathers and textiles from Grades A through Y. We’ve partnered with leading manufacturers on the options, focusing on color, price, durability, and construction. To view our partners and explore our digital carded program with broadly approved textiles, visit **this page**. We stand by these textiles: They’re tried and tested, and will effortlessly fit into any design aesthetic.

Textile Approvals
To view Stylex Approved Textile documents to determine specific product approval status, refer to our Product Tested Textiles documents, available in the Resources section of each product on our website.

CAL 117 AND 133 COMPLIANCE

CAL 117-2013
All Stylex seating satisfies the requirements of CAL 117-2013 so long as one of our standard or in-graded textiles is applied. COM textiles cannot be so guaranteed. Please contact the supplier of COM’s directly to determine the fire retardancy of any COM supplied to us.

CAL 133
Most Stylex seating can be ordered to meet the requirements of CAL 133. When ordering, simply specify “CAL 133 compliance required”. The upcharge for this option is \$54 list per yard. Please refer to the COM yardage of each model to determine the number of yards required. We do frequently require full-scale burn tests in order to certify CAL 133 before an order will be accepted. Such burn tests may increase normal lead times and do carry additional charges. Please contact customer service for details.

CUSTOMER’S OWN MATERIAL/LEATHER

Customer’s own material (COM) and customer’s own leather (COL) will generally be upholstered at the price designated in each product’s price list. Please be advised, however, that we specifically reserve the right to charge a higher price when we determine that special circumstances, such as unusual repeats or challenging materials, present themselves. All orders for custom coverings must be approved by Stylex before they will be accepted for production. To submit proposed textile for approval, please use the COM form **here**.

Special Note:
We assume no responsibility for the durability or tailoring quality of any COM or COL. Directional covers in particular may not meet your satisfaction due to the design of certain products. Please be advised that COM and COL orders are not subject to return. If you have doubts about the ultimate appearance of certain coverings, please order a sample done with that specific COM or COL. In addition, while we inspect textiles for mill imperfections, some are difficult to recognize. We cannot be responsible for defects, color inaccuracies, dye lot variations, or other flaws.

Under no circumstances will we be responsible for COM shortages, flaws, or other such problems. Finally, it is not our responsibility to police the receipt of COM’s in order to meet delivery deadlines, and we assume our customers are aware of any undue delay in the shipment of their COM textiles.

COM textile and COL leather should be sent prepaid to: Stylex
Attn: COM/COL - [Your PO #]
740 Coopertown Road
Delanco, NJ 08075

Clearly mark textile or leather with the dealer’s name, purchase order number, and furniture model number of the item to be covered. Actual furniture orders should include the same information, as well as a description of the textile or leather, including pattern and color number, in order to provide a cross reference.

Yardage requirements shown in the price list are based on non-directional goods of 54” width. Textiles less than 54" wide or those requiring matching (stripes, prints, or large patterned designs) call for additional yardage. We will be happy to supply yardage requirements for large quantities where economies may be realized.

Add the following yardage for stripes, plaids, or patterns with repeats:

Textile Width	Plain Textile	2-14" Repeat	15-24" Repeat	25-27" Repeat	28-36" Repeat
54"	0%	10%	15%	20%	25%
50"	10%	20%	25%	30%	35%
48"	15%	25%	30%	35%	40%
45"	40%	50%	55%	60%	65%
36"	50%	60%	65%	70%	75%

COM/COL FORM

To avoid delay in processing COM orders we request that you submit a sample of your COM textile stapled to this form which can be downloaded **here**. If a textile has a stripe or design, the size of the repeat should be indicated. Please indicate the textile supplier’s name, textile number, and color. Also indicate the Stylex product on which the textile will be used.

The textile supplier must indicate on his shipping labels the dealer name and purchase order number as well as the Stylex model number.

Please Note:
No order may be entered into production or have a shipping date assigned until all related COM is received at the factory.



CENTER OF STRIPE OR DESIGN

TOP	TOP
-----	-----

1. Size of Repeat
2. Textile Supplier
3. Textile Number
4. Color
5. Stylex Product

Contents

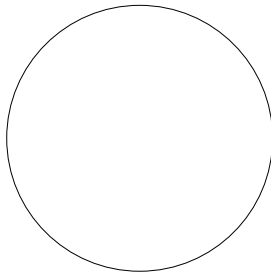
COLORS, MATERIALS, AND FINISHES	5	STACKING CHAIR: ARM & ARMLESS	9
STATEMENT OF LINE	6	STOOL: COUNTER	10
DIMENSIONS	7	STOOL: BAR	11
HOW TO ORDER	8		

CLICK THE TITLES ABOVE TO NAVIGATE THROUGH THE DOCUMENT
PRODUCT HEADERS ON SUBSEQUENT PAGES LINK BACK TO THIS PAGE

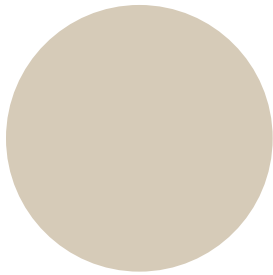
Zephyr

COLORS, MATERIALS, AND FINISHES

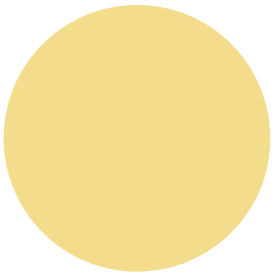
POWDER COAT FINISH



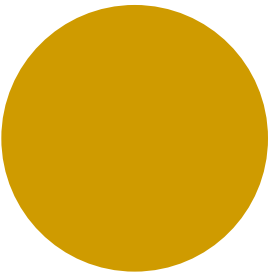
MILK
(MK)



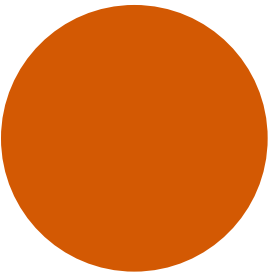
SAND
(SD)



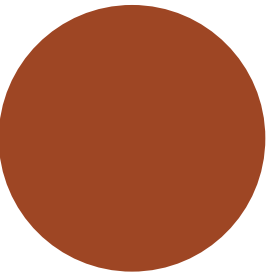
PALE YELLOW
(PY)



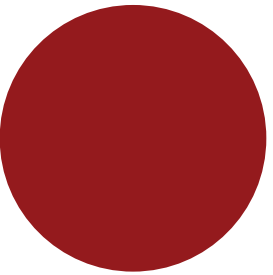
YELLOW
(YL)



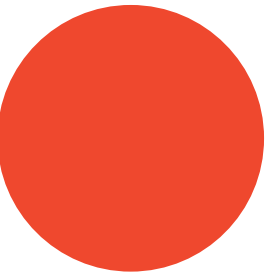
ORANGE
(OR)



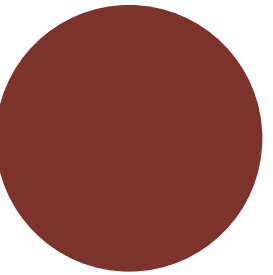
TERRACOTTA
(TC)



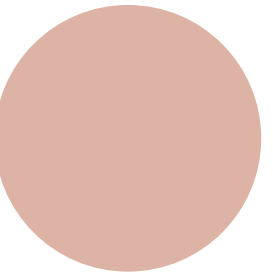
RED
(RD)



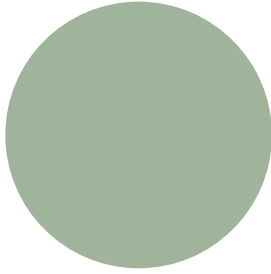
RED ORANGE
(RO)



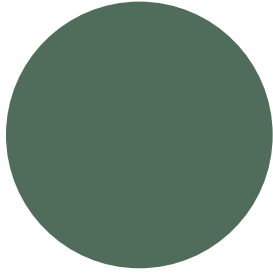
RUSTY RED
(RR)



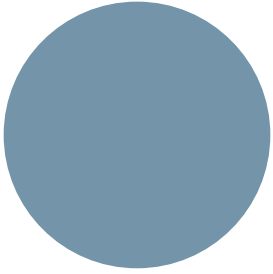
DUSTY PINK
(DP)



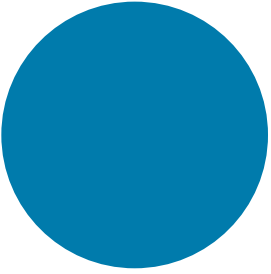
MEADOW GREEN
(MG)



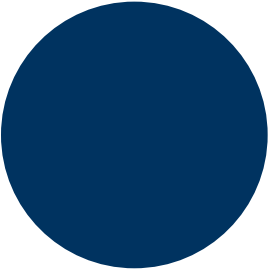
FOREST GREEN
(FG)



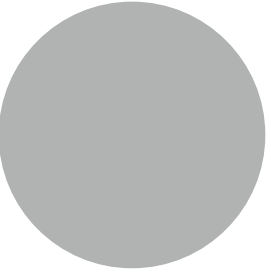
SOFT BLUE
(SB)



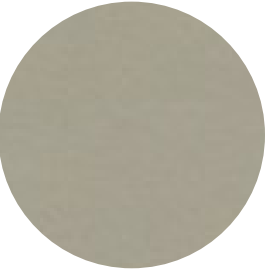
BLUE
(BL)



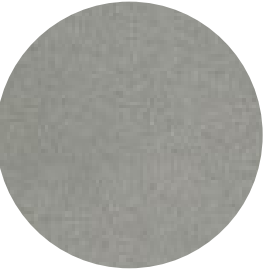
NAVY
(NV)



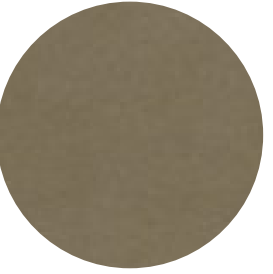
LIGHT GRAY
(LG)



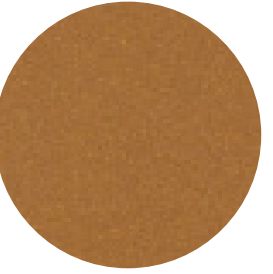
CHAMPAGNE
(CP)



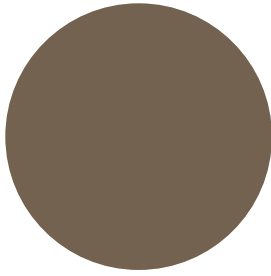
METALLIC SILVER
(MS)



NICKEL
(NK)



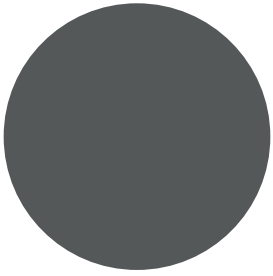
BRASS
(BR)



TAUPE
(TP)



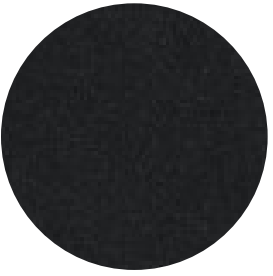
DARK BRONZE
(DB)



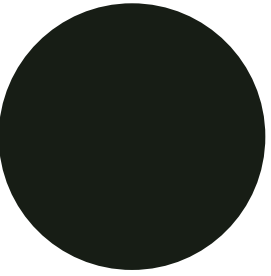
DARK GRAY
(DG)



TEXTURED SLATE
(TS)

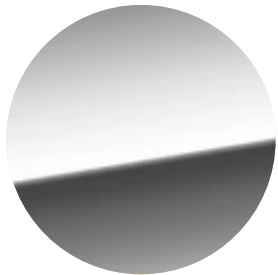


BLACK TWILIGHT
(BT)



BLACK MATTE
(BM)

POLISHED METAL LEG FINISH

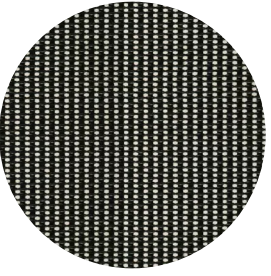


CHROME
(CH)

MESH FINISH



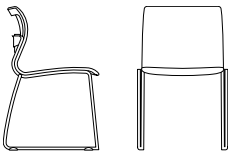
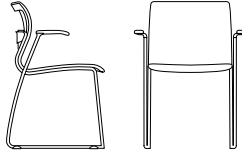
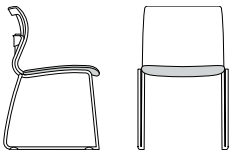
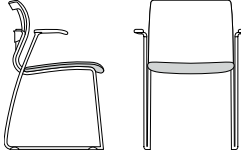
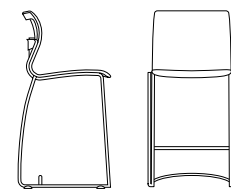
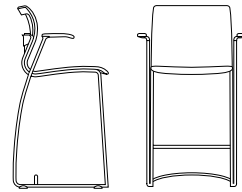
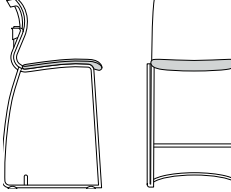
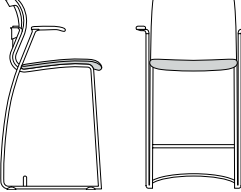
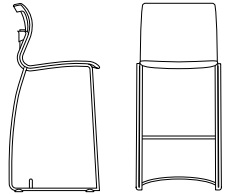
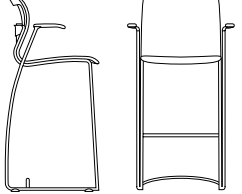
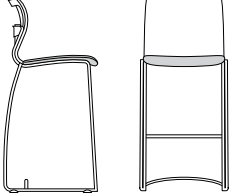
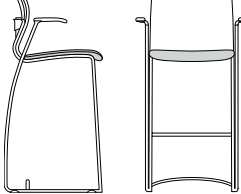
PLATINUM MESH
(102)



BLACK MESH
(101)

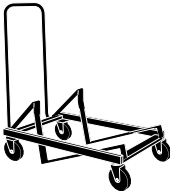
Zephyr

SPECIFICATION GUIDE: STATEMENT OF LINE

OVERVIEW	MESH SEAT, MESH BACK		UPHOLSTERED SEAT, MESH BACK	
Chair	Armless	Arm	Armless	Arm
				
Counter Stool	Armless	Arm	Armless	Arm
				
Bar Stool	Armless	Arm	Armless	Arm
				

ACCESSORIES

Transport Dolly



PRODUCT INFORMATION

Design

Sava Cvek

Construction

The seat and back frames which directly support the tensioned mesh are injection-molded, glass-filled nylon. Application of the mesh to the frames is achieved through a patented process to enhance both comfort and performance. Support frames are a combination of metal tube and cast aluminum.

Lumbar Cushion

Lumbar cushions are soft self-skinned polyurethane foam.

Arms

Arms are injection-molded polycarbonate.

Upholstered Seats

Seat pan is recycled polyurethane. Seat cushion is molded foam.

Glides

Glides are either plastic or plastic with felt pads.

Performance Standards

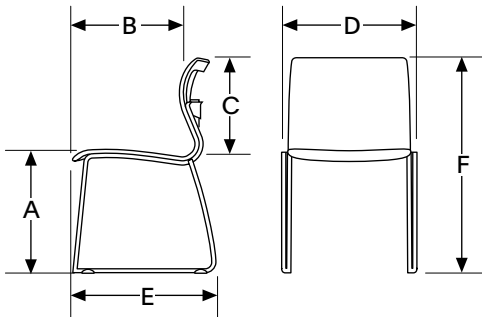
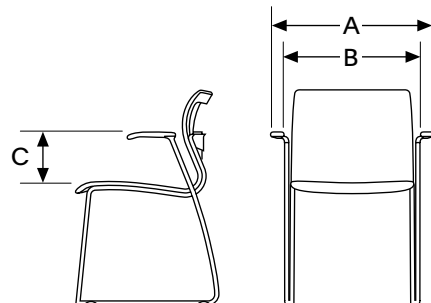
Manufactured to comply with:
ANSI/BIFMA X5.1 General-Purpose Office Chairs - Tests

Certifications

GREENGUARD Gold
LEVEL® 1, BIFMA's sustainability certification program for furniture

Zephyr

SPECIFICATION GUIDE: DIMENSIONS

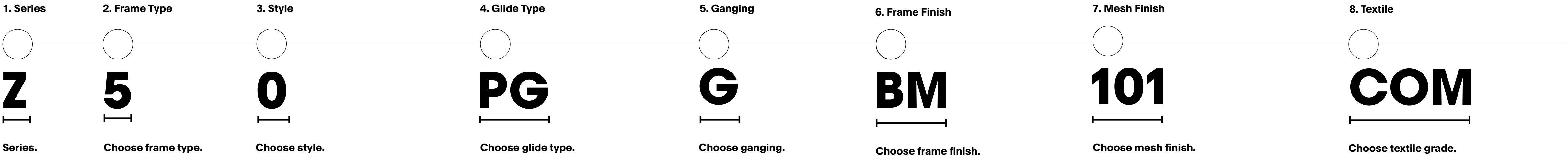
OVERVIEW		CHAIR		COUNTER STOOL		BAR STOOL	
<div><div>Dimensions</div><div><div>A. Seat Height</div><div>B. Seat Depth</div><div>C. Back Height</div><div>D1. Seat Width</div><div>D2. Overall Width</div><div>E. Overall Depth</div><div>F. Overall Height</div></div></div> <div></div>		<div><div>Mesh Seat, Mesh Back</div><div>A. 17.75</div><div>B. 18.5</div><div>C. 15</div><div>D1. 18</div><div>D2. 20.87</div><div>E. 22</div><div>F. 31</div></div>	<div><div>Upholstered Seat, Mesh Back</div><div>A. 17.75</div><div>B. 18.5</div><div>C. 15</div><div>D1. 18</div><div>D2. 20.87</div><div>E. 22</div><div>F. 31</div></div>	<div><div>Mesh Seat, Mesh Back</div><div>A. 25.25</div><div>B. 18.5</div><div>C. 15</div><div>D1. 18</div><div>D2. 21.25</div><div>E. 22</div><div>F. 38.5</div></div>	<div><div>Upholstered Seat, Mesh Back</div><div>A. 25.25</div><div>B. 18.5</div><div>C. 15</div><div>D1. 18</div><div>D2. 21.25</div><div>E. 22</div><div>F. 38.5</div></div>	<div><div>Mesh Seat, Mesh Back</div><div>A. 29.75</div><div>B. 17.5</div><div>C. 15</div><div>D1. 18</div><div>D2. 23.5</div><div>E. 19</div><div>F. 43</div></div>	<div><div>Upholstered Seat, Mesh Back</div><div>A. 29.75</div><div>B. 17.5</div><div>C. 15</div><div>D1. 18</div><div>D2. 23.5</div><div>E. 19</div><div>F. 43</div></div>
<div><div>Arm Choice</div><div><div>A. Overall Width</div><div>B. Arm Distance</div><div>C. Arm Height</div></div></div> <div></div>		<div><div>A. 23.5</div><div>B. 19</div><div>C. 8</div></div>	<div><div>A. 23.5</div><div>B. 19</div><div>C. 8</div></div>	<div><div>A. 23.5</div><div>B. 19</div><div>C. 8</div></div>	<div><div>A. 23.5</div><div>B. 19</div><div>C. 8</div></div>	<div><div>A. 23.5</div><div>B. 19</div><div>C. 8</div></div>	<div><div>A. 23.5</div><div>B. 19</div><div>C. 8</div></div>
<div><div>Max Stacking on Floor</div></div>		<div><div>Armless on Floor</div><div>6 High</div><div>21W x 31.75D x 40.5H</div></div>	<div><div>Armless on Floor</div><div>6 high</div><div>21W x 31.75D x 46H</div></div>				
		<div><div>Arm on Floor</div><div>6 High</div><div>23.5W x 31.75D x 40.5H</div></div>	<div><div>Arm on Floor</div><div>6 high</div><div>23.5W x 31.75D x 46H</div></div>				
<div><div>Max Stacking on Dolly</div></div>		<div><div>Arm & Armless on Dolly</div><div>18 High</div><div>27.5W x 44D x 70H</div></div>	<div><div>Arm & Armless on Dolly</div><div>9 high</div><div>27.5W x 44D x 61.75H</div></div>				

Zephyr

SPECIFICATION GUIDE: HOW TO ORDER

MODEL CODE BREAKDOWN

Sample Model Code: Z53FGGBM101COM



Series
Z - ZEPHYR

Frame Type
5 - ARMLESS CHAIR
6 - ARM CHAIR
7 - ARMLESS BAR
8 - ARM BAR
9 - ARMLESS COUNTER
0 - ARM COUNTER

Style
0 - MESH SEAT / MESH BACK
3 - UPHOLSTERED SEAT / MESH BACK

Glide Choice
PG - PLASTIC GLIDES
FG - PLASTIC GLIDES WITH FELT PADS

Ganging Option
G - ARMLESS GANGING

Frame Color
Standard Powder Coat
BL - BLUE
BM - BLACK MATTE
BR - BRASS
BT - BLACK TWILIGHT
CP - CHAMPAGNE
DB - DARK BRONZE
DG - DARK GRAY
DP - DUSTY PINK
FG - FOREST GREEN
LG - LIGHT GRAY
MG - MEADOW GREEN
MK - MILK
MS - METALLIC SILVER
NK - NICKEL
NV - NAVY
OR - ORANGE
PY - PALE YELLOW
RD - RED
RO - RED ORANGE
RR - RUSTY RED
SB - SOFT BLUE
SD - SAND
TC - TERRACOTTA
TP - TAUPE
TS - TEXTURED SLATE
YL - YELLOW

Other
CH - CHROME

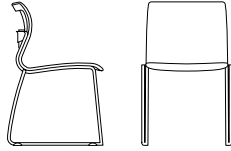
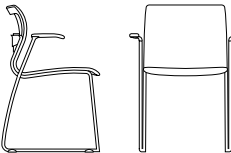
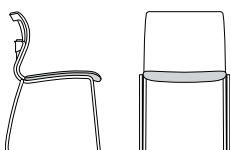
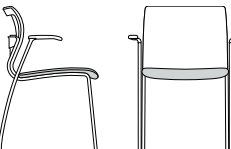
Mesh Finish
101 - BLACK MESH ON
BLACK NYLON UPHOLSTERY FRAMES
102 - PLATINUM MESH
ON GRAY/BEIGE UPHOLSTERY FRAMES

Textile
Textile Grades
COM - CUSTOMER'S OWN MATERIAL
A - GRADE A
B - GRADE B
C - GRADE C
D - GRADE D
E - GRADE E
F - GRADE F
G - GRADE G
H - GRADE H
I - GRADE I
J - GRADE J
K - GRADE K
L - GRADE L
M - GRADE M

Leather Grades
COL - CUSTOMER'S OWN LEATHER
W - GRADE W
X - GRADE X
Y - GRADE Y
E1 - GRADE E1
E2 - GRADE E2

Zephyr

STACKING CHAIR: ARM & ARMLESS

					COM	COL	Textile Upholstery Grades														Leather Upholstery Grades				
TITLE	SERIES	FRAME	STYLE	DIMENSIONS	YDG	SQFT	A	B	C	D	E	F	G	H	I	J	K	L	M	W	X	Y	E1	E2	
<div>Chair, Mesh Seat and Mesh Back, Armless</div> <div></div>	Z	5	0	20.9W x 22D x 31H	0.72	7	927																		
<div>Chair, Mesh Seat and Mesh Back, Arm</div> <div></div>	Z	6	0	23.5W x 22D x 31H	0.72	7	996																		
<div>Chair, Upholstered Seat and Mesh Back, Armless</div> <div></div>	Z	5	3	20.9W x 22D x 31H	0.72	7	818	840	867	891	912	941	967	996	1,030	1,066	1,116	1,159	1,201	1,003	1,029	1,138	1,196	1,283	
<div>Chair, Upholstered Seat and Mesh Back, Arm</div> <div></div>	Z	6	3	23.5W x 22D x 31H	0.72	7	889	911	939	962	987	1,015	1,038	1,071	1,103	1,138	1,190	1,233	1,275	1,075	1,101	1,210	1,268	1,355	

To Order Select Below

1. Series

Series

Z	ZEPHYR
Stacking on Floor: 6 high	
Stacking on Dolly: 18 high - Mesh Seat 9 high - Uph. Seat	

2. Frame

Frame

5	ARMLESS CHAIR
6	ARM CHAIR

3. Style

Style

0	MESH SEAT/ MESH BACK
3	UPHOLSTERED SEAT/ MESH BACK

4. Glide

Glide

PG	PLASTIC GLIDES
	PLASTIC GLIDES WITH FELT PADS
FG	

5. Options

Ganging

	ARMLESS GANGING	+25
G		

Accessories

	ZEPHYR TRANSPORT DOLLY	+1916
ZTD		

6. Frame Finish

Powder Coat

BL	BLUE	LG	LIGHT GRAY	RO	RED ORANGE
BM	BLACK MATTE	MG	MEADOW GREEN	RR	RUSTY RED
BR	BRASS	MK	MILK	SB	SOFT BLUE
BT	BLACK TWILIGHT	MS	METALLIC SILVER	SD	SAND
CP	CHAMPAGNE	NK	NICKEL	TC	TERRACOTTA
DB	DARK BRONZE	NV	NAVY	TP	TAUPE
DG	DARK GRAY	OR	ORANGE	TS	TEXTURED SLATE
DP	DUSTY PINK	PY	PALE YELLOW	YL	YELLOW
FG	FOREST GREEN	RD	RED		

Other

	CHROME ARMLESS	+100
CH		
	CHROME ARM	+104
CH		

7. Mesh

Mesh

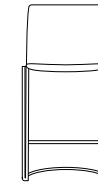

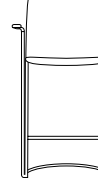

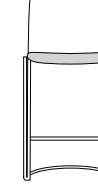

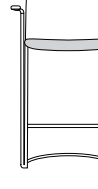

	BLACK MESH ON BLACK NYLON UPHOLSTERY FRAMES
101	
	PLATINUM MESH ON GRAY/BEIGE NYLON UPHOLSTERY FRAMES
102	

8. Upholstery

See general information section for details on textile program and COM/COL information.

Zephyr

COUNTER STOOL: ARM & ARMLESS

						COM		COL		Textile Upholstery Grades														Leather Upholstery Grades				
TITLE	SERIES	FRAME	STYLE	DIMENSIONS	YDG	SQFT	A	B	C	D	E	F	G	H	I	J	K	L	M	W	X	Y	E1	E2				
<div>Counter Stool, Mesh Seat and Mesh Back, Armless</div> <div></div>	Z	9	0	21.25W x 19D x 38.5H	0.72	7	1,258																					
<div>Counter Stool, Mesh Seat and Mesh Back, Arm</div> <div></div>	Z	0	0	23.5W x 19D x 38.5H	0.72	7	1,310																					
<div>Counter Stool, Upholstered Seat and Mesh Back, Armless</div> <div></div>	Z	9	3	21.25W x 19D x 38.5H	0.72	7	1,147	1,174	1,199	1,221	1,248	1,275	1,300	1,331	1,363	1,395	1,449	1,492	1,533	1,336	1,362	1,469	1,526	1,612				
<div>Counter Stool, Upholstered Seat and Mesh Back, Arm</div> <div></div>	Z	0	3	23.5W x 19D x 38.5H	0.72	7	1,200	1,224	1,251	1,275	1,300	1,327	1,351	1,385	1,415	1,449	1,502	1,545	1,587	1,388	1,414	1,521	1,578	1,664				

To Order Select Below

1. Series

Series

Z	ZEPHYR
---	--------

2. Frame

Frame

9	ARMLESS COUNTER
0	ARM COUNTER

3. Style

Style

0	MESH SEAT/ MESH BACK
3	UPHOLSTERED SEAT/ MESH BACK

4. Glide

Glide

PG	PLASTIC GLIDES
FG	PLASTIC GLIDES WITH FELT PADS

5. Frame Finish

Powder Coat

BL	BLUE	LG	LIGHT GRAY	RO	RED ORANGE
BM	BLACK MATTE	MG	MEADOW GREEN	RR	RUSTY RED
BR	BRASS	MK	MILK	SB	SOFT BLUE
BT	BLACK TWILIGHT	MS	METALLIC SILVER	SD	SAND
CP	CHAMPAGNE	NK	NICKEL	TC	TERRACOTTA
DB	DARK BRONZE	NV	NAVY	TP	TAUPE
DG	DARK GRAY	OR	ORANGE	TS	TEXTURED SLATE
DP	DUSTY PINK	PY	PALE YELLOW	YL	YELLOW
FG	FOREST GREEN	RD	RED		

Other

CH	CHROME ARMLESS	+287
CH	CHROME ARM	+315

6. Mesh

Mesh

101	BLACK MESH ON BLACK NYLON UPHOLSTERY FRAMES
102	PLATINUM MESH ON GRAY/BEIGE NYLON UPHOLSTERY FRAMES

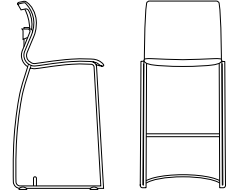
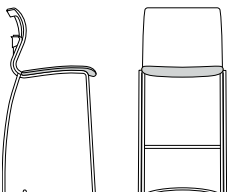
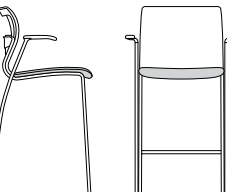
7. Upholstery

See general information section for details on textile program and COM/COL information.

10

Zephyr

BAR STOOL: ARM & ARMLESS

						COM		COL		Textile Upholstery Grades														Leather Upholstery Grades				
TITLE	SERIES	FRAME	STYLE	DIMENSIONS	YDG	SQFT	A	B	C	D	E	F	G	H	I	J	K	L	M	W	X	Y	E1	E2				
Bar Stool, Mesh Seat and Mesh Back, Armless		Z	7	0	21.25W x 19D x 43H	0.72	7	1,258																				
Bar Stool, Mesh Seat and Mesh Back, Arm																												
Bar Stool, Upholstered Seat and Mesh Back, Armless		Z	7	3	21.25W x 19D x 43H	0.72	7	1,147	1,174	1,199	1,221	1,248	1,275	1,300	1,331	1,363	1,395	1,449	1,492	1,533	1,336	1,362	1,469	1,526	1,612			
Bar Stool, Upholstered Seat and Mesh Back, Arm																												
Bar Stool, Upholstered Seat and Mesh Back, Arm		Z	8	3	23.5W x 19D x 43H	0.72	7	1,200	1,224	1,251	1,275	1,300	1,327	1,351	1,385	1,415	1,449	1,502	1,545	1,587	1,388	1,414	1,521	1,578	1,664			

To Order Select Below

1. Series

Series

Z	ZEPHYR
---	--------

2. Frame

Frame

7	ARMLESS BAR
8	ARM BAR

3. Style

Style

0	MESH SEAT/ MESH BACK
3	UPHOLSTERED SEAT/ MESH BACK

4. Glide

Glide

PG	PLASTIC GLIDES
FG	PLASTIC GLIDES WITH FELT PADS

5. Frame Finish

Powder Coat

BL	BLUE	LG	LIGHT GRAY	RO	RED ORANGE
BM	BLACK MATTE	MG	MEADOW GREEN	RR	RUSTY RED
BR	BRASS	MK	MILK	SB	SOFT BLUE
BT	BLACK TWILIGHT	MS	METALLIC SILVER	SD	SAND
CP	CHAMPAGNE	NK	NICKEL	TC	TERRACOTTA
DB	DARK BRONZE	NV	NAVY	TP	TAUPE
DG	DARK GRAY	OR	ORANGE	TS	TEXTURED SLATE
DP	DUSTY PINK	PY	PALE YELLOW	YL	YELLOW
FG	FOREST GREEN	RD	RED		

Other

CH	CHROME ARMLESS	+287
CH	CHROME ARM	+315

6. Mesh

Mesh

101	BLACK MESH ON BLACK NYLON UPHOLSTERY FRAMES
102	PLATINUM MESH ON GRAY/BEIGE NYLON UPHOLSTERY FRAMES

7. Upholstery

See general information section for details on textile program and COM/COL information.

11